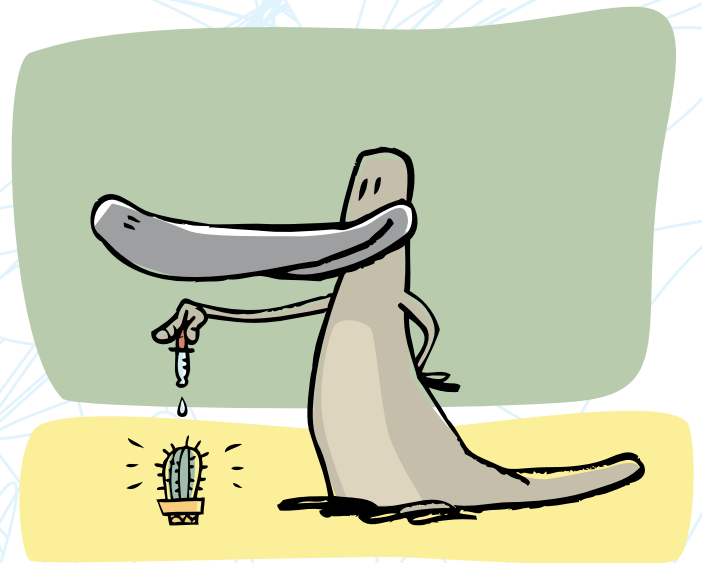


WaterWise Plants

Choosing the right plants for the Queensland climate can save water and your time in caring for them. There is a range of native and exotic plants that look great and thrive in dry conditions. Speak to your local nursery for recommendations on which plants suit your environment.

Here are just some of the plants well suited to the Queensland environment.



Australian WaterWise Plants

Low plants and climbers

- Angular pigface *Carpobrotus glaucescens*
- Helichrysum or straw flower *Bracteantha bracteata*
- Snake vine *Hibbertia scandens*
- Spiny mat rush *Lomandra longifolia*
- Spreading flax-lily *Dianella revoluta*
- Twiggy Baeckea *Baeckea virgata*
- Wallaby grass *Danthonia species*
- Wonga Wonga vine *Pandorea pandorana*

Medium shrubs

- *Acacia* species (many are WaterWise)
- *Grevillea* species (many are WaterWise)
- Hairpin Banksia *Banksia spinulosa*
- Hop bush *Dodonaea viscosa*
- Long-leaf waxflower *Eriostemon myoporoides*
- Narrow-leafed palm lily *Cordyline stricta*
- Native rosemary *Westringia 'Wynabbie gem'*
- Silver Banksia *Banksia marginata*
- Sturt's desert rose *Gossypium sturtianum*

factsheet

Tall shrubs and trees

- Bribie Island pine *Callitris columellaris*
- Brown laurel *Cryptocarya triptinervis*
- *Casuarina* species (most are WaterWise)
- *Eucalyptus* species (most are WaterWise)
- Kurrajong and bottle tree *Brachychiton* species
- Native rosella *Hibiscus heterophyllus*
- Norfolk Island hibiscus *Lagunaria patersonii*
- Tuckeroo *Cupaniopsis anacardioides*
- Weeping bottlebrush *Callistemon viminalis*
- Willow bottlebrush *Callistemon salignus*

Exotic WaterWise plants

Annuals and perennials

- *Gaillardia*
- *Gazania*
- *Liriope*
- *Portulaca*
- *Salvia*
- African daisy *Arctotis*
- *Alyssum*
- Butterfly Iris *Dietes*
- Daylily *Hemerocallis*
- Livingstone daisy
- Mexican daisy *Erigeron*

Shrubs

- *Ixora coccinea*
- Plumbago
- Coral plant *Russelia*
- Croton
- Cycads
- Lavender
- Rosemary
- Thyme
- Veldt daisy *Osteospermum*
- Yesterday, today, tomorrow *Brunfelsia*

Tall shrubs and trees

- Banksia rose
- Butterfly tree *Bauhinia*
- Crepe myrtle
- Frangipani
- Golden trumpet tree
- Red powder puff *Calliandra*
- Yellow cane palm