

## WaterWise in the Bathroom

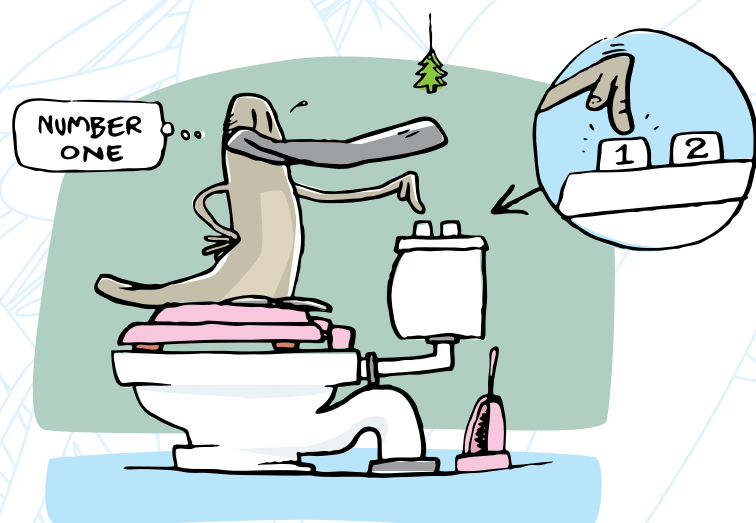
*We use more water in our bathrooms than in any other part of the house. It's a great place to start when looking for ways to save water, money and the environment.*

### Change your habits

- ▶ Take shorter showers. Limit yourself to the time it takes to soap up, wash down, and rinse off
- ▶ If you want a long soak take a bath, it can be relaxing and uses less water than a long shower
- ▶ Turn the tap off while brushing your teeth and use a glass for rinsing
- ▶ Don't rinse your razor under a running tap – use a little warm water in the sink for rinsing
- ▶ Don't use the toilet to flush away cigarette butts, tissues or other rubbish
- ▶ Turn taps off properly and fix dripping taps promptly

Maintain good habits at work and on holiday, not just at home.

**Tip for the bathroom:** A leaking toilet can waste more than 60,000 litres of water per year. Check for leaks by putting a little food colouring in the tank. If within 10 minutes the colouring begins appearing in the bowl without flushing, get the cistern repaired immediately.



### Call the plumber

#### Install a dual flush toilet

Traditional toilets can usually be adjusted to lose less water, however with a dual flush unit you'll save up to eight litres of water every half flush and six litres of water every full flush.

#### Install a water-saving shower

Save water, money and the environment. With a high-quality water-efficient shower you:

- ▶ won't notice the difference in showering experience
- ▶ save around \$50 to \$100 in water and energy costs every year.

Install a shower with an efficiency star rating of three stars or more.

## factsheet

### Install tap aerators or flow control valves

A tap aerator can save you about half the amount of water you would use with a standard tap.

A flow control valve can reduce the flow of water through a tap to a more manageable level.

Install water control devices:

- ▶ for the laundry and bathroom taps (12 litres per minute recommended)
- ▶ for the kitchen taps (nine litres per minute recommended)
- ▶ for handbasin taps (six litres per minute recommended)

### Save hot water

Make sure your hot water system thermostat is not set too high. Adding cold water to cool too-hot water is wasteful.

If you have a spa, ensure it is well insulated to keep water warm for longer.

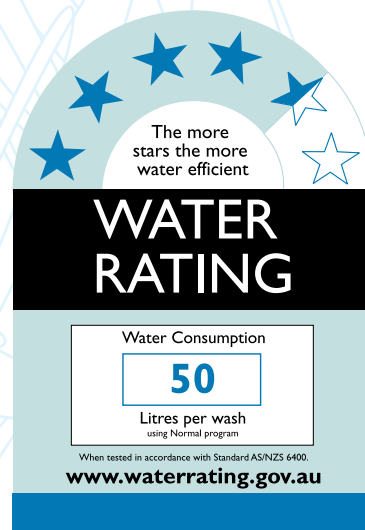
**Tip for the bathroom:** *Shower to your favourite song. This will ensure your shower is only three minutes long.*

### Check for leaks

If you have a water meter, turn all taps off before you go to bed one night and take a meter reading. Check the meter next morning before any water is used. If the meter reading has advanced you may have a leaking pipe, dripping tap or faulty toilet cistern. Locate the problem and call a plumber.

A dripping tap can waste 30-200 litres of water per day. Turn taps off properly, check washers for wear and attend to leaking taps.

**Tip for the bathroom:** *Don't turn the taps on quickly. Adding cold water to balance hot water is wasteful.*



### Renovating?

When renovating select products with a high water-efficient star rating.

The National Water Efficiency Labelling and Standards Scheme rates the efficiency of products on a scale of zero to six stars.

The more stars the more efficient the appliance so – “reach for the stars.”

### More information:

Visit [www.waterrating.gov.au](http://www.waterrating.gov.au) or [www.epa.qld.gov.au/waterwise](http://www.epa.qld.gov.au/waterwise) or phone the EPA on (07) 3225 1999